



Galaxy Network Solutions



“Listening to Business, Applying Technology”



Who we are

- Incorporated in 1987.
- An ISO 9000:2008 organization.
- Amongst the most respected Information Technology Integrators.
- Leading provider of best of breed products and solutions for Infrastructure, Networking, Security, Application Delivery, Automation and Business Intelligence.
- Annual Sales of over INR 250 Crores.
- PAN India presence.
- Committed team of over 250 skilled professionals.
- Our Clients include the leading enterprises in India from sectors like Banking, Finance, Insurance, Manufacturing, Retail, Telecommunications, IT/ITES, Entertainment, Healthcare, Government etc.

Our Business Units

**GALAXY
BUSINESS
SOLUTIONS**

**GALAXY
TECHNOLOGY
SERVICES**

**GALAXY
NETWORK
SOLUTIONS**

**GALAXY BI
CONSULTING
SERVICES**



What we do

GALAXY NETWORK SOLUTIONS

is one of the most trusted active and passive networking specialist offering a comprehensive range of networking services and technical solutions aimed at small, medium and large enterprises.

“GNS has installed more than 10,000 KM of structured cabling including voice cabling, CAT5e, CAT6, CAT 7 and fiber optic networks across a broad range of industry sectors.”



- Data Centre Infrastructure Management
- Structured Cabling
- LAN Validation & Audit
- Consulting & Project Management Services
- Switching/Routing



Data Centre Infrastructure Management

Data centre infrastructure management can optimize the performance, efficiency, and business value of IT physical infrastructure and keep it seamlessly aligned with the needs of the business.

DCIM can help decision makers:

- Locate, visualize, and manage all of their physical assets within an integrated “single pane” view of the entire infrastructure.
- Automate the commissioning of new equipment, and capacity planning with unparalleled forecasting capabilities.
- Reduce energy consumption, energy costs, and carbon footprint .





DCIM contd..

GNS is the only implementation partner for Panduit PIM™ (Physical Infrastructure Management) software in India. The Panduit PIM™ software platform is an enterprise-class DCIM tool that manages asset tracking, allocation and utilization information. Combined with connectivity management data through PanView iQ (PViQ) system hardware, PIM™ enables data centre managers to proactively manage capacity.

Panduit's modular approach to delivering DCIM functionality enables you to customize the DCIM solution to meet the needs of your organization both now and in the future. The modules are:

- PIM™ Asset Tracking Module
- PIM™ Connect Module
- PIM™ Dashboards & Reports Module
- PIM™ Power Module
- PIM™ Integration Module
- Panduit's PViQ™ System Hardware
- PViQ™ Patch Panels
- PViQ™ Power Outlet Units (POUs)



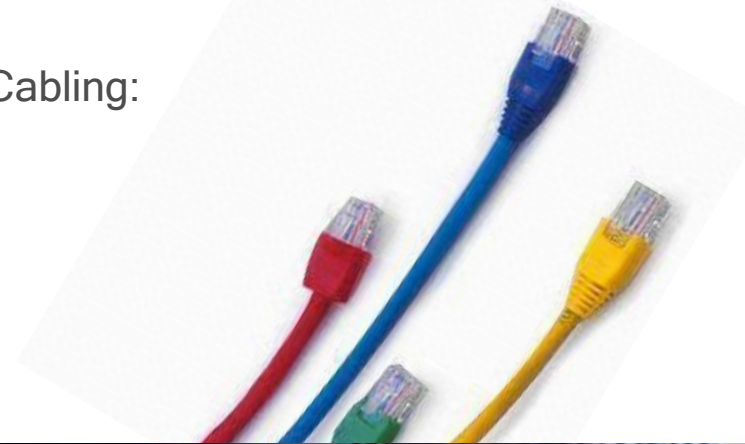


Structured Cabling

Cabling Infrastructure is the hub of each voice, data and multimedia network. A well designed, installed, and administered cabling system reduces costs through each phase of its life cycle: installation; moves, adds, and changes; maintenance and administration.

We offer the following services with respect to Structured Cabling:

- Comprehensive planning and onsite consultation.
- Specification documentation and feasibility reports.
- Local area network design.
- Product supply and installation.
- Site audit and recommendation reports.





Structured Cabling Components

Our Structured Cabling component include:

- Patch panels
- Work area outlets
- Keystone jacks
- Modular plugs
- Fibre optics
- Wiring ducts and trunking
- Wire mesh cable trays and combirack system



- Patch cords
- Cables
- Installation accessories & tools
- Racks and cabinets
- Access floor
- Power distribution units
- Cable managers





LAN Validation

GNS is authorized by Fluke Networks to use their state of the art testing equipment for LAN validation. LAN validation is a process for network installers (VARs, System integrators, network operators) to verify and document LAN performance.

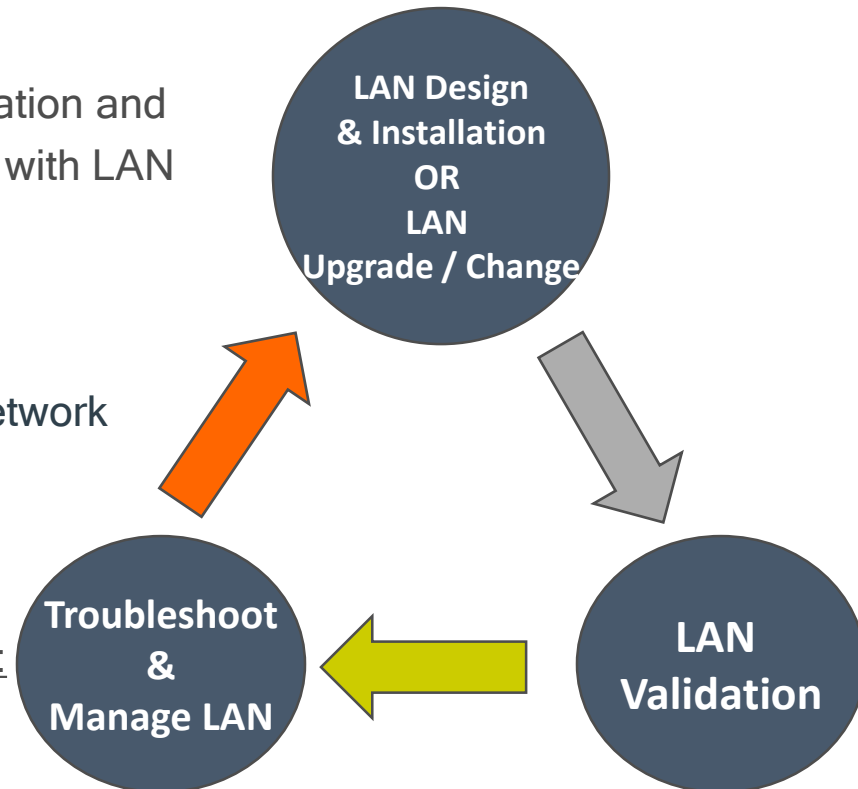
LAN validation is an element of LAN & WLAN installation and maintenance workflow. It is the final task associated with LAN design and LAN upgrade projects.

Benefits of LAN validation:

- Increased employee productivity, by maximizing network performance & minimizing downtime.
- Cost reduction.

LAN Validation Services has two broad components:

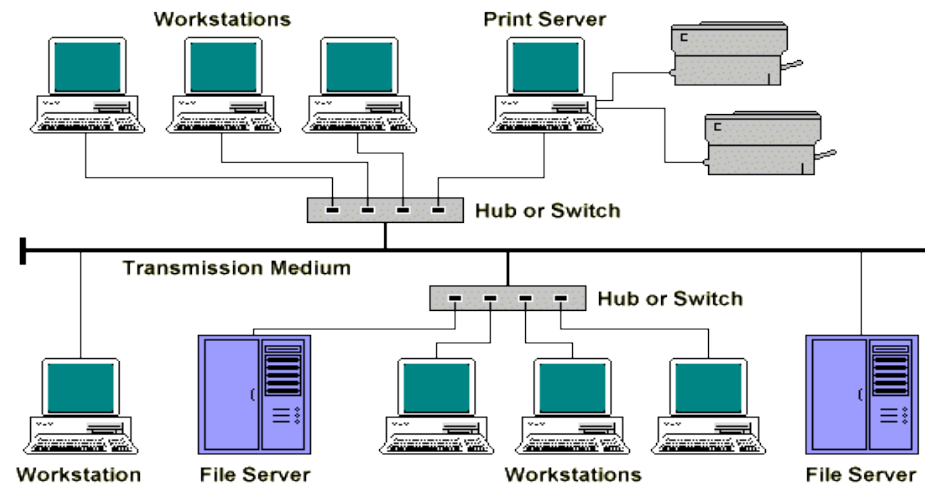
- Wired LAN Validation
- Wireless LAN (WLAN) Validation





Wired LAN Validation

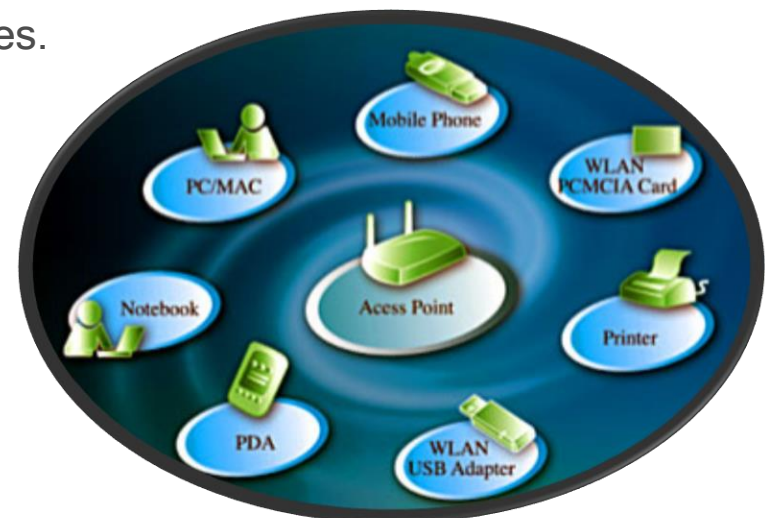
- Identify and help isolate network performance bottlenecks like throughput, latency, frame loss, jitter.
- Identify and resolve connectivity issues across switch fabric of the LAN.
- Identify bad cable links or too long links, signalling and PoE (IEEE 802.3af and IEEE 802.3at) voltage verification.
- Identify faulty or poorly functioning switches (excessive CRC errors, faulty network interfaces, port speed and duplex mismatches, over and underutilized interfaces to name a few).
- Identify devices assigned to wrong VLANs, Subnets, devices patched to wrong switches.
- Identify Services unavailable, slow applications, poorly performing servers.
- Identify any unauthorized users connected on the network .





Wireless LAN Validation

- Solve RF coverage and throughput performance issues of wireless access points.
- Ensure Wireless coverage is not bleeding into areas not required to be covered - increase efficient use of APs and avoid security problems.
- Identify and resolve Wi-Fi spectrum interference issues that limit wireless throughput.
- Identify and isolate rogue access points / applications on the network - Improve throughput and security.
- Test and validate for WLAN compliance to HIPPA, SOX, ISO 27001, PCI DSS
 - ✓ HIPPA - Pharma and Medical services companies.
 - ✓ SOX - Any internationally listed company.
 - ✓ ISO 27001 - Customers who have IT Quality / Security practices conforming to ISO standards.
 - ✓ PCI DSS - Banks, financial services, Insurance.





Consulting & Project Management

Our consulting & Project management services include:

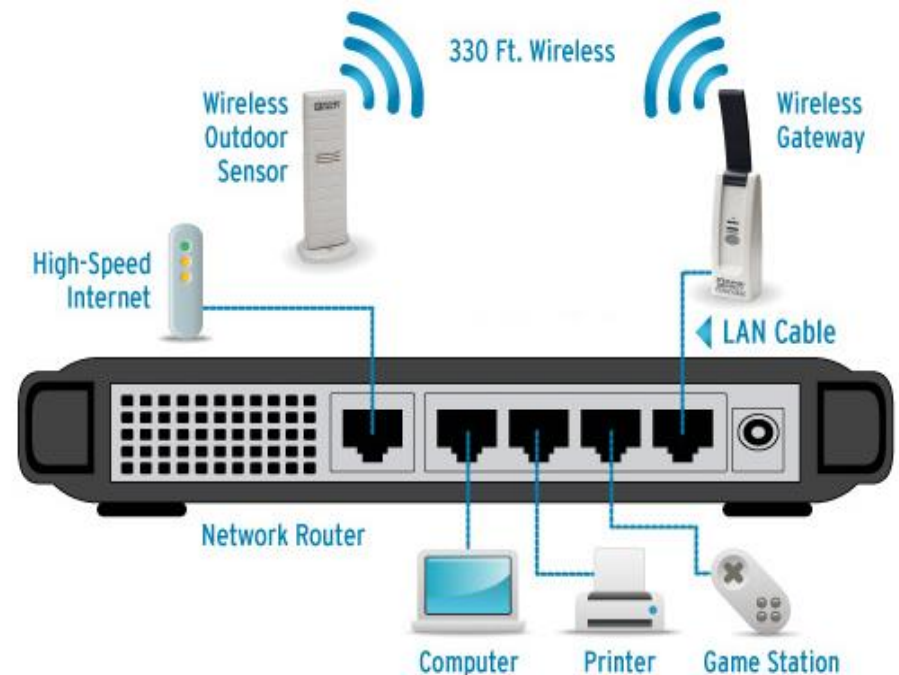
- Project Outline
- Project Team
- Audit and documentation services
- Technology planning
- Network design
- Ongoing consulting and project management
- Physical infrastructure design.
- Wireless network setup





Switching/Routing

Switchers and routers are the basis of the network. Switchers are used to connect multiple devices on the same network (LAN), while routers are used to connect multiple networks (on the WAN) to each other. With rising security concerns and dangers like DOS attacks, hacking, identity theft etc routers and switchers are now equipped to solve these issues.





Business Associations

Registered Reseller





Reach us at:

Sales: sales@goapl.com

Tel#: 91-22-46108777

Support: helpdesk@goapl.com

Tel#: 91-22-42187700

Visit us at www.goapl.com



